

OVERVIEW

The SR/F Luggage Rack Kit (p/n 10-08239) was designed by Zero Motorcycles to augment the utility of your Zero SR/F. It includes both the top rack assembly and the side rack assembly. These racks are manufactured using black powder-coated steel. The SR/F Luggage Rack and SHAD Cases Kit (p/n 10-08286), includes this luggage rack kit, and a SHAD SH39 top case, the SHAD adapter plate, two SHAD SH23 side cases and all necessary hardware for installation.

The SR/F Side Rack Assembly (p/n 10-08285) can be purchased separately for those that already own the SR/F Top Rack Assembly (p/n 10-08214). *However, the side rack assembly must be installed together with the SR/F Top Rack Assembly (p/n 10-08214).*

The SR/F Side Rack Assembly supports the attachment of two SHAD SH23 side cases to the motorcycle. Lockable, easily removable and aerodynamic, the SHAD SH23 side cases enable you to maximize the storage of your SR/F. Positioned on the sides of the motorcycle, they widen the rear of your motorcycle roughly the same amount as the handlebars. With each having 23 liters of capacity and a maximum load of 10lbs (4.5kg), a side case is not large enough to hold a helmet, but can store many other goods simultaneously.

Install Time: Approx. 60 minutes (80 minutes with cases).

REQUIRED TOOLS AND PARTS

SPECIAL TOOLS REQUIRED

- None

PARTS REQUIRED

SR/F Side Rack Assembly (p/n 10-08285) includes:

ITEM	PART NUMBER	QTY	ITEM NAME
1	20-01362	4	Cable Tie, 5.56 in., Black
2	26-08367	1	Indicator Light Bracket
3	26-08382	1	Side Case Support, Left
4	26-08384	1	Side Case Support, Right
5	26-08385	1	Side Case Support, Cross Bar
6	90-02059	6	Hex Socket Countersunk Head Screw M6X18 8.8
7	90-08234	4	Hex Flange Bolt Star Drive M6x25 8.8
8	90-08295	4	Hex Flange Bolt Star Drive M6x12 8.8

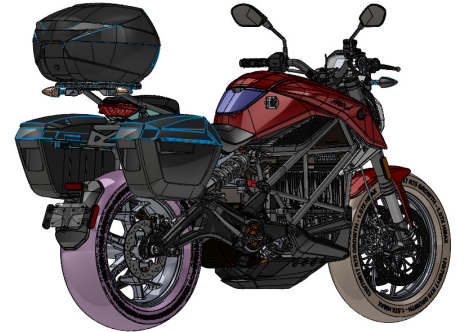


Image 1. SR/F Luggage Rack Kit and Cases



Image 2. SR/F Luggage Rack Kit and Cases

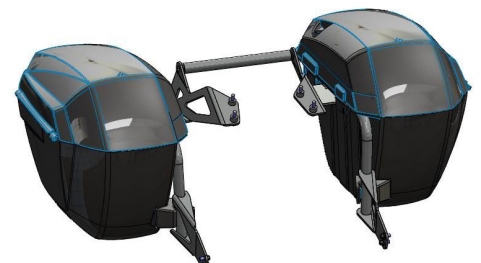


Image 3. SR/F Side Rack Assembly and Cases

REQUIRED TOOLS AND PARTS

SR/F Top Box Rack Assembly (p/n 10-08214) includes:

ITEM	PART NUMBER	QTY	ITEM NAME
9	20-01362	1	Cable Tie, 5.56 in., Black
10	26-08197	1	Top Rack Assembly
11	26-08346	1	Top Rack Turn Signal Support
12	90-08124	2	Hex Head Flange Bolt Star Drive M6x16 8.8
13	90-08164	4	Hex Head Flange Bolt Star Drive M6x20 10.9

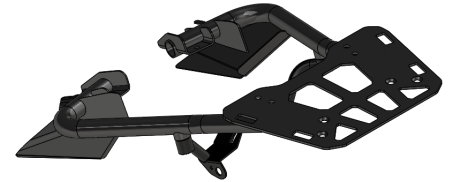


Image 4. SR/F Top Rack Assembly

SR/F Luggage Rack Kit With Shad Cases (p/n 10-08286) additionally includes:

ITEM	PART NUMBER	QTY	ITEM NAME
14	24-08481	1	SHAD SHD39 Top Case with Adapter Plate
15	24-08495	1 set	SHAD SH23 Side Cases
16	46-08246	1m	Weather Seal Black Rubber Double “D” 7.9MM X 9.1MM 1025
17	81-08087	300mm	Foam Strip, 1/8” thick and 3/4” wide, adhesive back
18	90-08164	4	Hex Flange Bolt Star Drive M6x20 10.9

INSTALLATION INSTRUCTIONS

1. Confirm that you have all parts before starting the installation. If any parts are missing, please contact the Zero Motorcycles Aftersales Team with your order number, and the missing items will be sent promptly.
2. Remove the passenger seat by unlocking with key and pulling up and forward. See Figure 1.
3. Using a T30 Torx bit socket and ratchet, remove both grab handles from the tail frame. See Figure 2.



Figure 1. Passenger Seat Removed



Figure 2. Grab Handle Removal

INSTALLATION INSTRUCTIONS (CONT'D)

4. Remove the two T25 bolts holding the turn signal bracket in place. Retain the plastic bracket cover for use. See Figure 3.
5. Detach rear turn signals from turn signal bracket using a 17mm wrench. See Figure 4.
6. Remove the seat tray from the frame using a T25 Torx bit socket and ratchet. See Figure 5.
7. Carefully cut the zip tie securing the wires under the seat tray. See Figure 6.

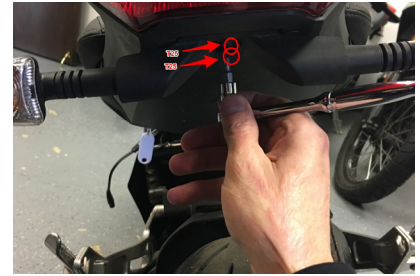


Figure 3. Turn Signal Bracket Removal



Figure 4. Turn Signals Detached



Figure 5. Seat Tray Removal



Figure 6. Cable Tie Location

INSTALLATION INSTRUCTIONS (CONT'D)

8. Disconnect the left and right turn signals from the main harness by pulling apart the connectors. See Figure 7.
9. Remove the five bolts holding the tail trunk pan using a T25 Torx bit socket and ratchet. See Figure 8.
10. Locate the four indentations on the inside of the tail trunk pan. See Figure 9, which shows them on the left side.
11. At each indentation, drill a 9/16 in (14mm) hole. See Figure 10.
12. Reinstall the tail trunk pan using the retained five bolts using a T25 Torx bit socket and ratchet. Torque to 3.5 ft-lbs (5 Nm).

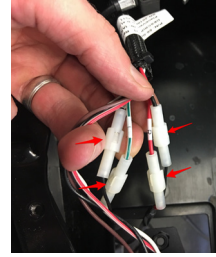


Figure 7. Turn Signal Connectors

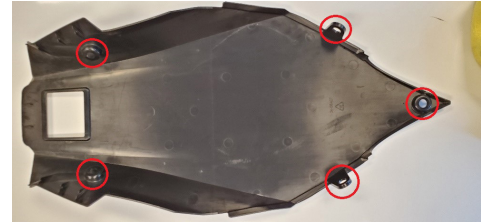


Figure 8. Tail Trunk Pan Bolt Locations

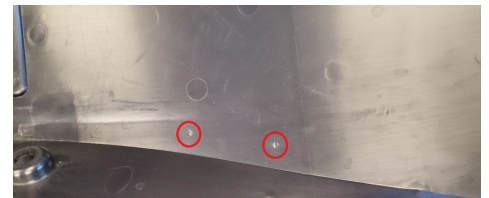


Figure 9. Tail Trunk Pan Indentations - Left



Figure 10. Tail Trunk Pan With Drilled Holes

INSTALLATION INSTRUCTIONS (CONT'D)

13. Attach the Side Case Support, Left (Item 3) to the motorcycle using two M6x25 Hex Flange Star Drive Bolts (Item 7), but do not fully tighten. See Figure 11.
14. Attach the Side Case Support, Right (Item 4) to the motorcycle using two M6x25 Hex Flange Star Drive Bolts (Item 7), but do not fully tighten.
15. Secure the bottoms of each of the Side Case Supports to the rear sets using two M6x12 Hex Flange Star Drive Bolts (Item 8), but do not fully tighten. See Figure 12.
16. Attach the Side Case Support, Cross Bar (Item 5) to the Side Case Supports using the M6x18 Hex Socket Countersunk Head Screws (Item 6). See Figure 13.
17. Fully tighten all bolts used in steps 14, 15 and 16 and torque to 10 ft-lbs (14 Nm).
18. Attach the rear turn signals to the Indicator Light Bracket (Item 2) using the existing hardware and a 17mm wrench. See Figure 14, but note that picture shows this bracket attached to Top Rack Assembly, which will not occur until step 23.

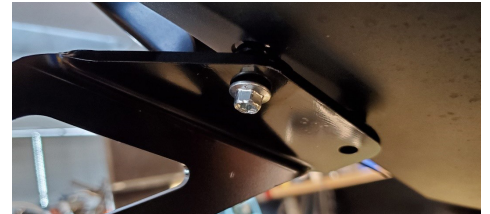


Figure 11. Side Case Support Attachment



Figure 12. Side Case Support Secured To Rear Set

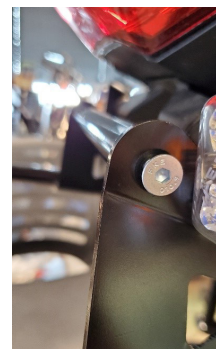


Figure 13. Side Case Support, Cross Bar Secured



Figure 14. Indicator Light Bracket with Turn Signal

INSTALLATION INSTRUCTIONS (CONT'D)

19. Route turn signal wires back through the Top Rack Turn Signal Support Bracket (Item 11) and the tail frame. Then, reconnect to the main harness. Left turn signal is white to white connection. Right turn signal is red to red connection. Connect black to black on properly marked sides. See Figure 15.

WARNING: ENSURE WIRES ARE NOT PINCHED AND THAT THERE IS NOT AN EXCESS OF WIRE AT THE TAIL LIGHT.

20. Snap the retained plastic turn signal bracket cover on to the Top Rack Turn Signal Support (Item 11) and secure under the tail of the motorcycle. Torque bolts to 3.5 ft-lbs (5 nm). See Figure 16.
21. If needed, secure wires inside tail frame using Cable Tie (Item 8) leaving sufficient wire length to attach turn signals and Indicator Light Bracket (Item 2) to the Top Rack Assembly (Item 10). Turn on motorcycle and test that turn signals are operating normally before proceeding. See Figure 17.
22. Install the seat tray and secure rear end with existing bolts. Torque to 3.5 ft-lbs (5 nm). See Figure 18.

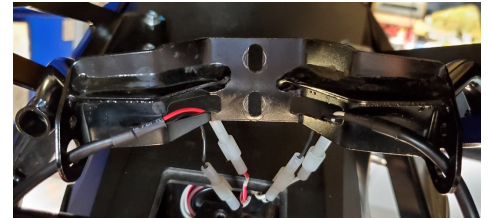


Figure 15. Turn Signal Wires Through Turn Signal Support Bracket



Figure 16. Turn Signal Support Bracket and Cover Attachment



Figure 17. Wires Inside Tail Frame

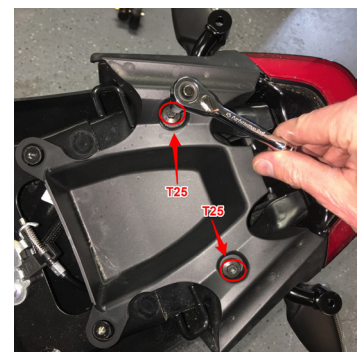


Figure 18. Seat Tray Reinstalled

INSTALLATION INSTRUCTIONS (CONT'D)

23. Attach the Top Rack Assembly (Item 10) to the tail frame using the supplied Hex Head Flange Bolt Star Drive M6x20 (Item 13) and a T30 Torx bit socket and ratchet. Hand tighten only at this time. See Figure 19.
24. Secure the Top Rack Turn Signal Support (Item 11) to the Top Rack Assembly (Item 10) using the supplied Hex Head Flange Bolt Star Drive M6x16 (Item 12). Torque to 10 ft-lbs (14 nm). See Figure 20.
25. Torque Top Rack Assembly bolts securing it to the tail frame to 10 ft-lbs (14 nm).
26. Attach the Indicator Light Bracket (Item 2) with the attached turn signals to the Top Rack Assembly (Item 10) using four of the Hex Socket Countersunk Head Screws M6x10 (Item 6). Torque to 10 ft-lbs (14 nm). See Figure 21.
27. Route the turn signal wires down along the Top Rack Assembly (Item 10) and secure using two Cable Ties (Item 1) on each side as shown in Figure 22.

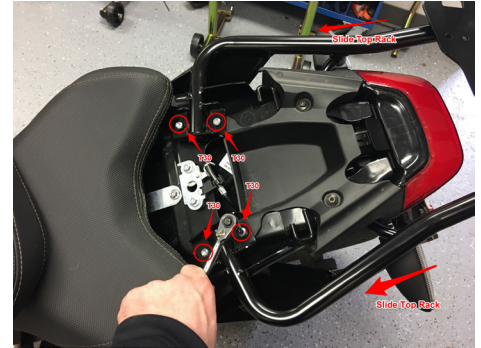


Figure 19. Top Rack Assembly Secured



Figure 20. Secure Top Rack Turn Signal Support



Figure 21. Attach Indicator Support To Top Rack



Figure 22. Route And Secure Turn Signal Wires

INSTALLATION INSTRUCTIONS (CONT'D)

28. Replace passenger seat.

Continue only if also installing the Top Case With Adapter Plate, SHAD SH39 (Item 14).

29. Mount the SHAD adapter plate using the lock nuts, washers and brackets supplied with the SHAD Top Case (Item 14) and the four Hex Head Flange Bolt Star Drive M6X20 (Item 18). Bolts will be positioned pointing upward. Tighten only to hand tight. See Figures 23 and 24.

30. Center the SHAD adapter plate on the Top Rack Assembly metal top plate. Then, fully tighten the lock nuts to secure the adapter plate.

31. Insert covers into SHAD adapter plate. See Figure 25.

32. To ensure a more silent ride and limit any rattling of the top case, two 0.15 meter foam tape strips (Item 17) can be installed along the cover plates. See Figure 26.

33. The Weather Seal Black Rubber Double “D” 7.9MM X 9.1MM 1025 (Item 16) should be installed along the edge of the SHAD SH39 top case. See Figure 27.

34. Attach the SHAD SH23 Side Cases (Item 15) on to the side case racks per the instructions provided by SHAD.

35. Snap the SHAD SH39 Top Case (Item 14) into place per the instructions provided by SHAD to complete the installation.



Figure 23. Mount The SHAD Adapter Plate (below)



Figure 24. Mount The SHAD Adapter Plate (above)



Figure 25. Left Cover Inserted



Figure 27. Weather Seal Installed On Case



Figure 26. Foam Strips For A More Silent Ride